

ROSAE 2

edificio

SUPERFICIE UTIL CERRADA

RECIBIDOR	10,25
COCINA	16,20
SALÓN COMEDOR	32,60
DISTRIBUIDOR	4,70
BAÑO I	4,85
BAÑO II	3,55
SUITE	17,60
DORMITORIO II	10,75
DORMITORIO III	11,20

TOTAL (A) 111,70

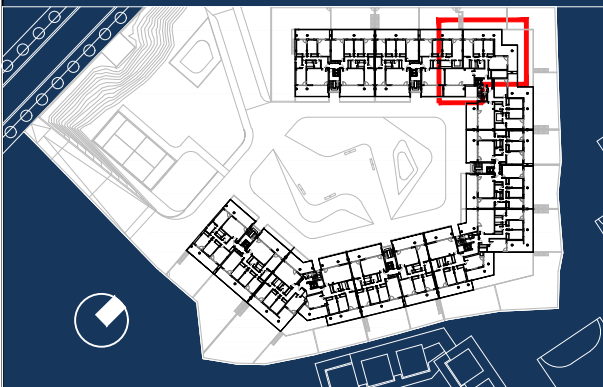
SUPERFICIE UTIL TERRAZAS

TERRAZA CUBIERTA I	15,45
TERRAZA CUBIERTA II	54,15

TOTAL (B) 69,60

SUPERFICIE UTIL TOTAL

TOTAL (A+B) 181,30



GESTIONA:

CONSTRUYE:


























EDIFICIO ROSAE 2





E8 3° A

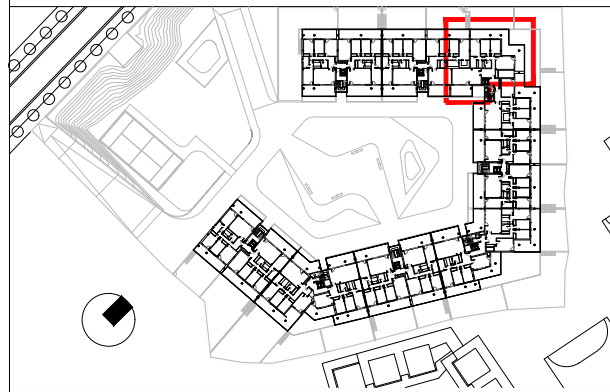


LEYENDA DE INSTALACIONES:
ELECTRICIDAD

-  PUNTO DE LUZ
-  FOCO EN TECHO DE TERRAZA
-  FOCOS EN VIVENDA
-  LUMINARIA EN PARED EXTERIOR
-  INTERRUPTOR
-  INTERRUPTOR ESTANCO
-  CONMUTADOR
-  CRUZAMIENTO
-  TOMA DE CORRIENTE USOS VARIOS 10/16A
-  TOMA DE CORRIENTE USOS VARIOS 10/16A ESTANCO
-  TOMA DE CORRIENTE 25A COCINA Y HORNO
-  TOMA DE CORRIENTE CAMPANA EXTRACTORA
-  VIDEOPORTERO
-  PORTERO
-  ZUMBADOR
-  PULSADOR TIMBRE ENTRADA
-  CUADRO ELÉCTRICO
-  CUADRO DE CONTROL FRÍO, CALOR
-  CONTROL DE VENTILACIÓN MECÁNICA
-  TOMA RJ45 (TELÉFONO)
-  TOMA RED TBA COAXIAL
-  TOMA RTV+SAT
-  TOMA RESERVA (configurable)

VENTILACIÓN - CLIMATIZACIÓN

-  UNIDAD BIBLOC
-  UNIDAD EXTERIOR DE AEROTERMIA
-  EQUIPO DE VENTILACIÓN MECÁNICA CON RECUPERADOR DE CALOR
-  COLECTOR SUELO RADIANTE



GESTIONA:



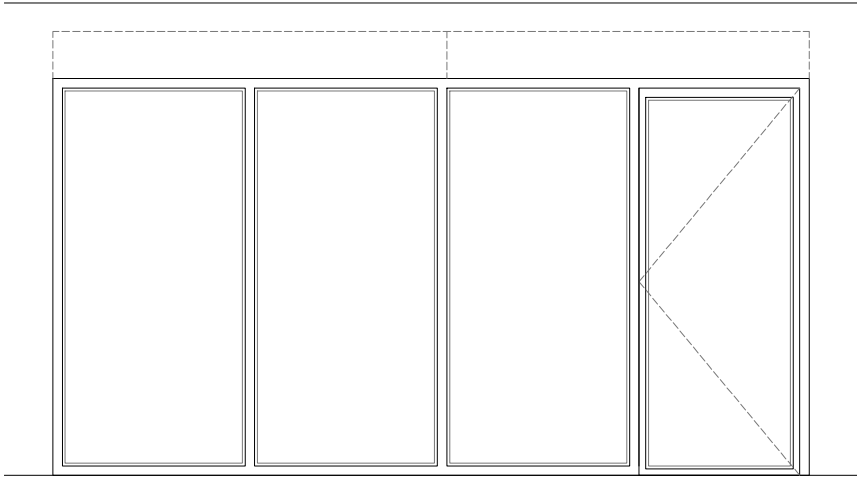
CONSTRUYE:



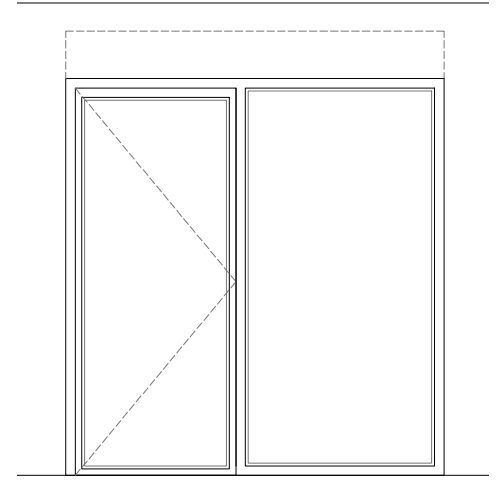
EDIFICIO ROSAE 2

E8 2º 3º A

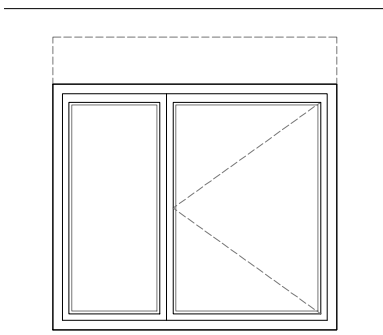




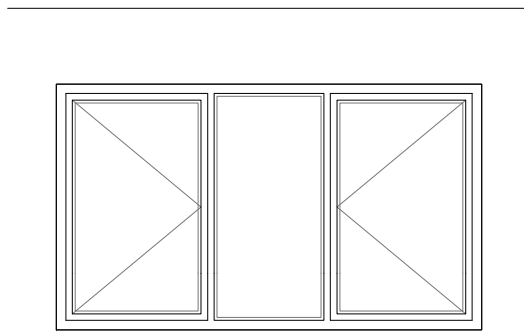
SALÓN*
FIJOS. ABATIBLE CON PERSIANA MOTORIZADA



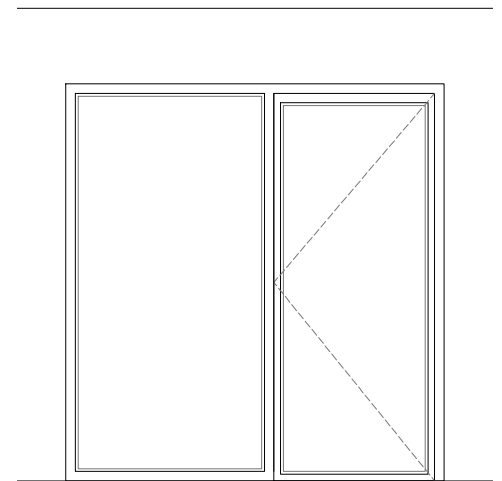
SUITE*
FIJO. ABATIBLE CON PERSIANA MOTORIZADA



DORMITORIO 2-3*
FIJO. ABATIBLE CON PERSIANA MOTORIZADA



COCINA*
FIJO, ABATIBLES



COCINA*
FIJO. ABATIBLE

* ESTANCIA CON CARPINTERÍAS DE ALTAS PRESTACIONES PARA CUMPLIMIENTO ESTÁNDAR PASSIVHAUS



GESTIONA:

CONSTRUYE:



EDIFICIO ROSAE

E8 2º3º A CARPINTERÍAS