

ROSAE 2

edificio

SUPERFICIE UTIL CERRADA

PLANTA INFERIOR	
RECIBIDOR	10,25
COCINA	16,20
SALÓN COMEDOR	32,60
DISTRIBUIDOR	4,70
BAÑO I	4,85
BAÑO II	3,55
SUITE	17,60
DORMITORIO II	10,75
DORMITORIO III	11,20

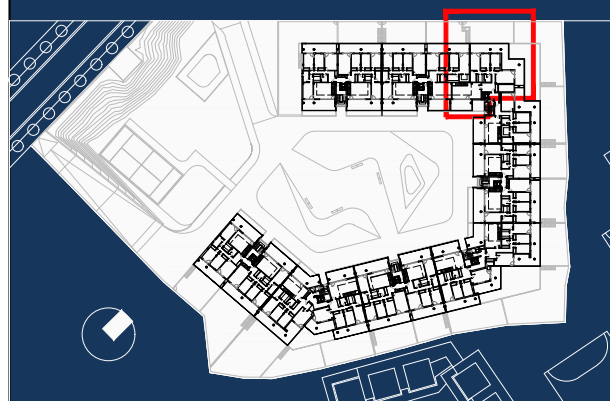
TOTAL PLANTA INFERIOR 111,70

PLANTA SUPERIOR	
ÁTICO	22,80
TOTAL (A)	134,50

SUPERFICIE UTIL TERRAZAS	
TERRAZA CUBIERTA I	15,45
TERRAZA CUBIERTA II	54,15
TOTAL TERRAZA CUBIERTA	69,60
TERRAZA SOLARIUM I	188,50

TOTAL TERRAZA SOLARIUM 188,50
TOTAL (B) 258,10

SUPERFICIE UTIL TOTAL
TOTAL (A+B) 392,60



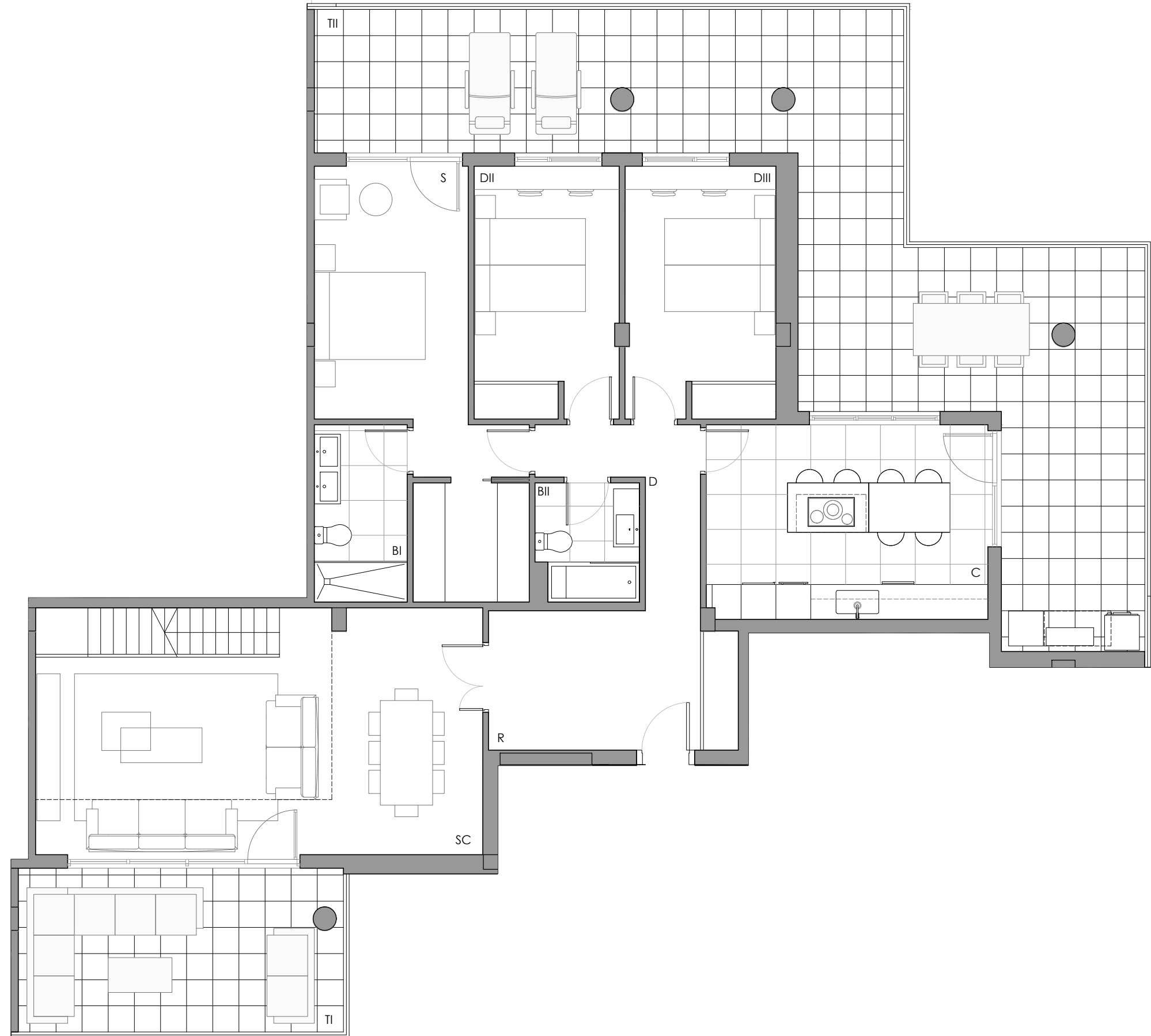
GESTIONA:

CONSTRUYE:



EDIFICIO ROSAE 2

E8 4º A. NIVEL INFERIOR

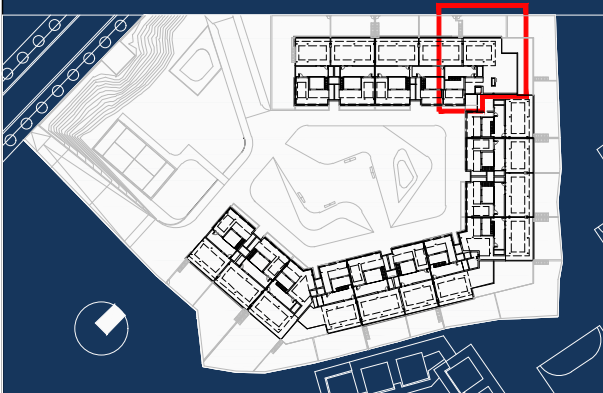


ROSAE 2

edificio

SUPERFICIE UTIL CERRADA

PLANTA INFERIOR	
RECIBIDOR	10,25
COCINA	16,20
SALÓN COMEDOR	32,60
DISTRIBUIDOR	4,70
BAÑO I	4,85
BAÑO II	3,55
SUITE	17,60
DORMITORIO II	10,75
DORMITORIO III	11,20
TOTAL PLANTA INFERIOR	111,70
PLANTA SUPERIOR	
ÁTICO	22,80
TOTAL (A)	134,50
SUPERFICIE UTIL TERRAZAS	
TERRAZA CUBIERTA I	15,45
TERRAZA CUBIERTA II	54,15
TOTAL TERRAZA CUBIERTA	69,60
TERRAZA SOLARIUM I	188,50
TOTAL TERRAZA SOLARIUM	188,50
TOTAL (B)	258,10
SUPERFICIE UTIL TOTAL	
TOTAL (A+B)	392,60



GESTIONA:

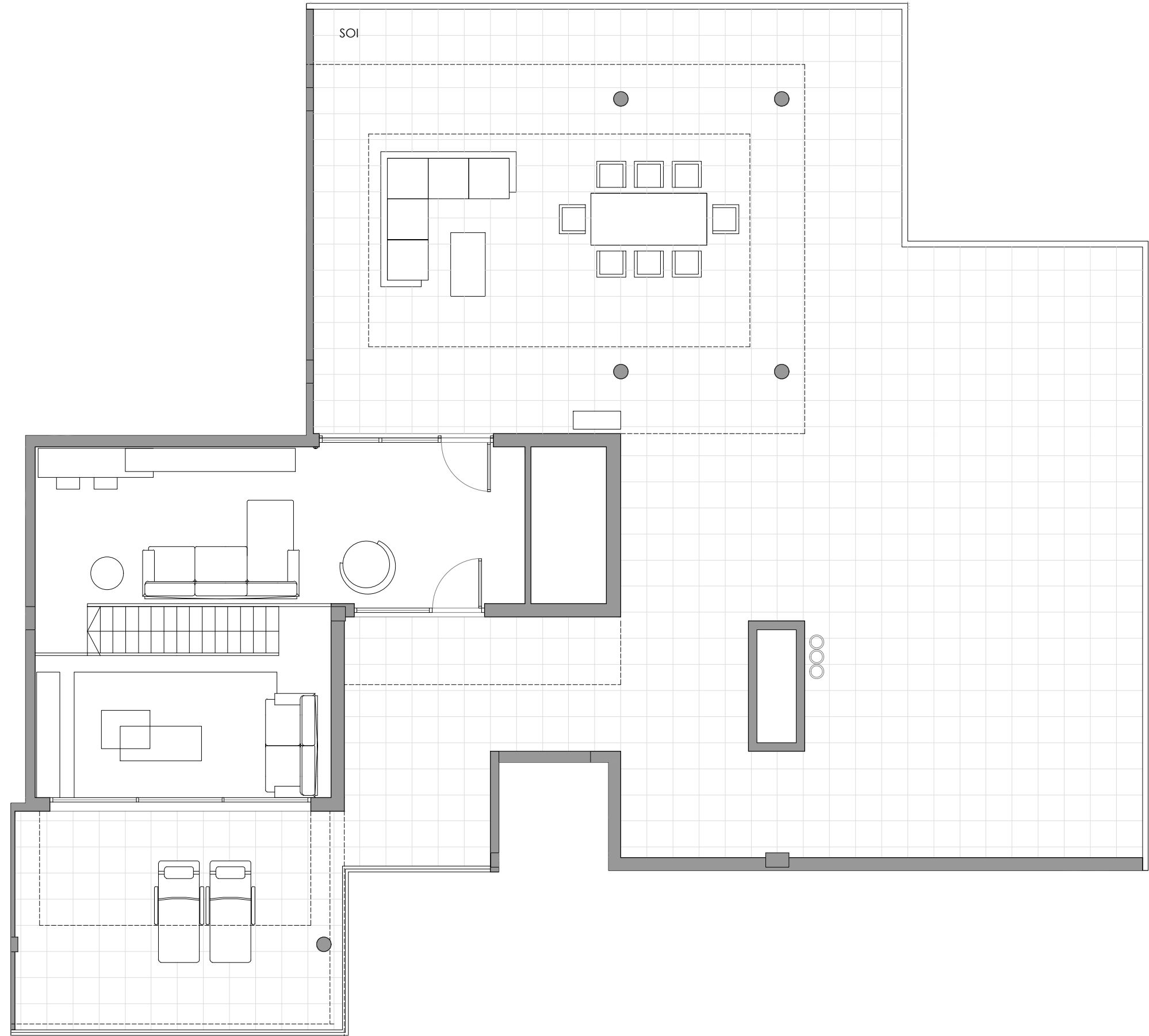


CONSTRUYE:



























EDIFICIO ROSAE 2


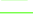
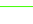



E8 4º A. NIVEL SUPERIOR



LEYENDA DE INSTALACIONES:
ELECTRICIDAD

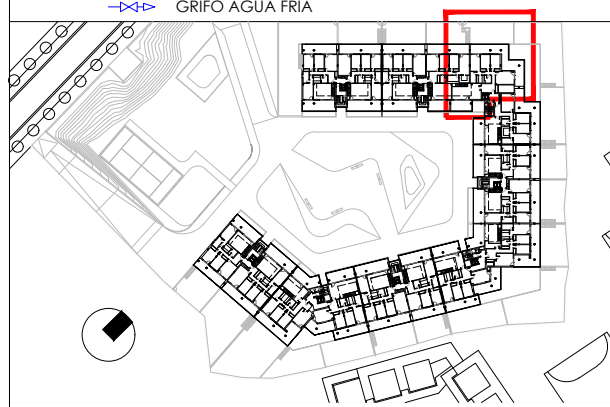
-  PUNTO DE LUZ
-  FOCO EN TECHO DE TERRAZA
-  FOCOS EN VIVENDA
-  LUMINARIA EN PARED EXTERIOR
-  INTERRUPTOR
-  INTERRUPTOR ESTANCO
-  CONMUTADOR
-  CRUZAMIENTO
-  TOMA DE CORRIENTE USOS VARIOS 10/16A
-  TOMA DE CORRIENTE USOS VARIOS 10/16A ESTANCO
-  TOMA DE CORRIENTE 25A COCINA Y HORNO
-  TOMA DE CORRIENTE CAMPANA EXTRACTORA
-  VIDEOPORTERO
-  PORTERO
-  ZUMBADOR
-  PULSADOR TIMBRE ENTRADA
-  CUADRO ELÉCTRICO
-  CUADRO DE CONTROL FRÍO, CALOR
-  CONTROL DE VENTILACIÓN MECÁNICA
-  TERMOSTATO UNIDAD TERMINAL DE CLIMATIZACIÓN
-  TOMA RJ45 (TELÉFONO)
-  TOMA RED TBA COAXIAL
-  TOMA RTV+SAT
-  TOMA RESERVA (configurable)

VENTILACIÓN - CLIMATIZACIÓN

-  UNIDAD BIBLOC
-  UNIDAD EXTERIOR DE AEROTERMIA
-  EQUIPO DE VENTILACIÓN MECÁNICA CON RECUPERADOR DE CALOR
-  UNIDAD EXTERIOR DE CLIMATIZACIÓN
-  UNIDAD INTERIOR DE CLIMATIZACIÓN
-  COLECTOR SUELO RADIANTE

FONTANERÍA

-  GRIFO AGUA FRÍA



GESTIONA:



CONSTRUYE:



EDIFICIO ROSAE 2

























E8 4º A. NIVEL INFERIOR









ROSAE 2

edificio

LEYENDA DE INSTALACIONES: ELECTRICIDAD

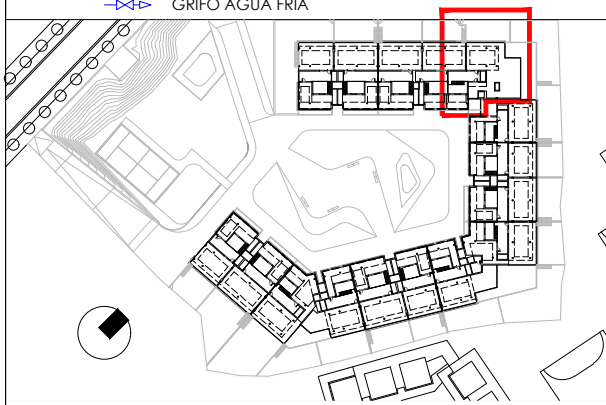
-  PUNTO DE LUZ
-  FOCO EN TECHO DE TERRAZA
-  FOCOS EN VIVENDA
-  LUMINARIA EN PARED EXTERIOR
-  INTERRUPTOR
-  INTERRUPTOR ESTANCO
-  CONMUTADOR
-  CRUZAMIENTO
-  TOMA DE CORRIENTE USOS VARIOS 10/16A
-  TOMA DE CORRIENTE USOS VARIOS 10/16A ESTANCO
-  TOMA DE CORRIENTE 25A COCINA Y HORNO
-  TOMA DE CORRIENTE CAMPANA EXTRACTORA
-  VIDEOPORTERO
-  PORTERO
-  ZUMBADOR
-  PULSADOR TIMBRE ENTRADA
-  CUADRO ELÉCTRICO
-  CUADRO DE CONTROL FRÍO, CALOR
-  CONTROL DE VENTILACIÓN MECÁNICA
-  TERMOSTATO UNIDAD TERMINAL DE CLIMATIZACIÓN
-  TOMA RJ45 (TELÉFONO)
-  TOMA RED TBA COAXIAL
-  TOMA RTV+SAT
-  TOMA RESERVA (configurable)

VENTILACIÓN - CLIMATIZACIÓN

-  UNIDAD BIBLOC
-  UNIDAD EXTERIOR DE AEROTERMIA
-  EQUIPO DE VENTILACIÓN MECÁNICA CON RECUPERADOR DE CALOR
-  UNIDAD EXTERIOR DE CLIMATIZACIÓN
-  UNIDAD INTERIOR DE CLIMATIZACIÓN
-  COLECTOR SUELO RADIANTE

FONTANERÍA

-  GRIFO AGUA FRÍA



GESTIONA:

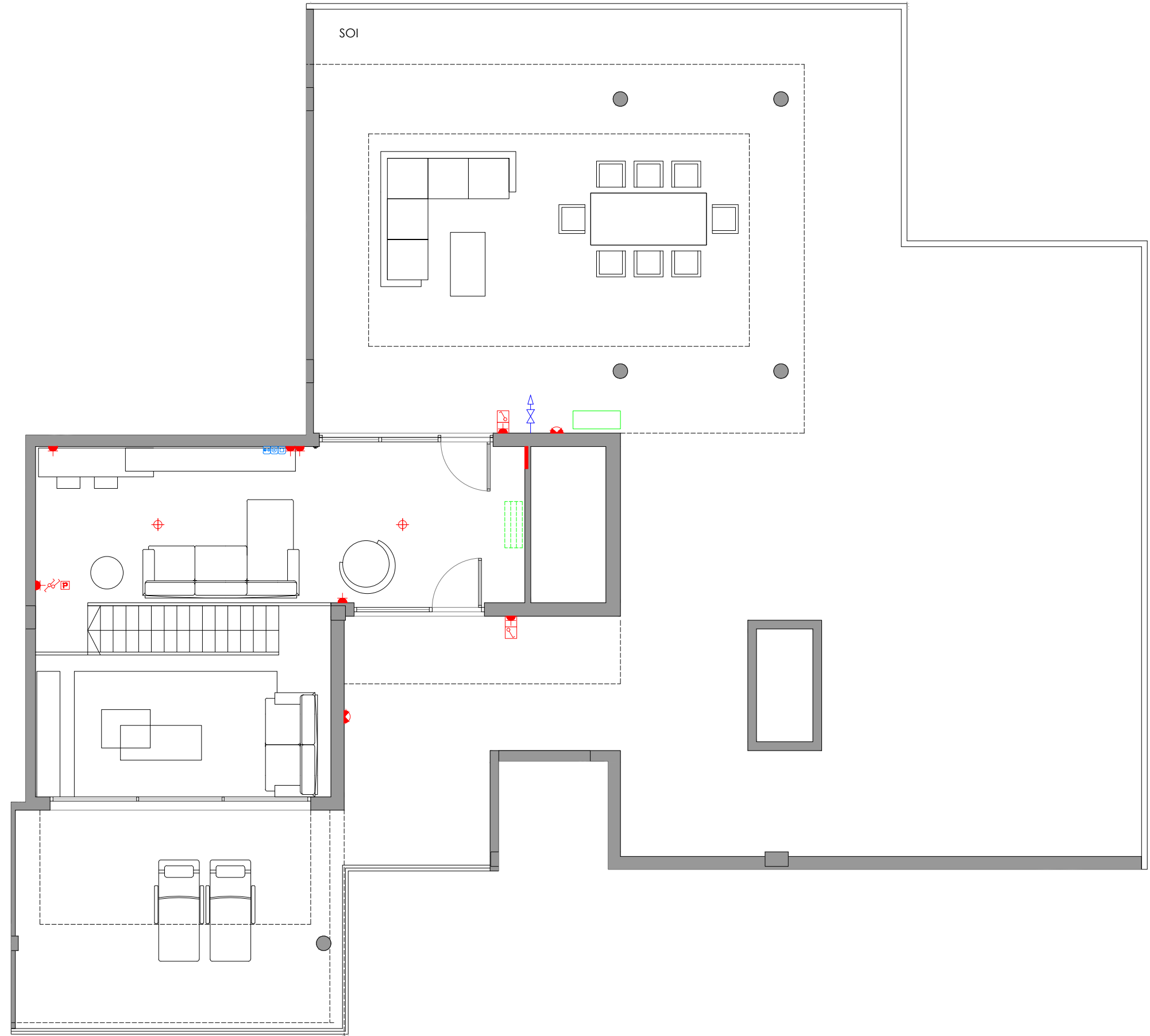


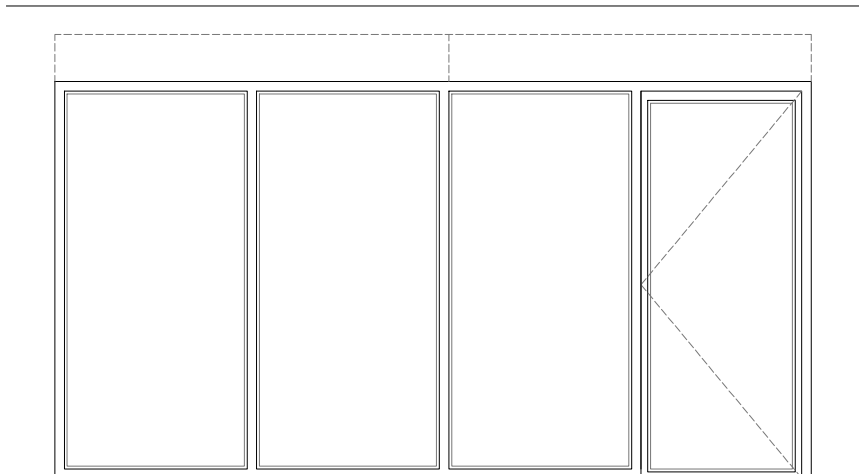
CONSTRUYE:



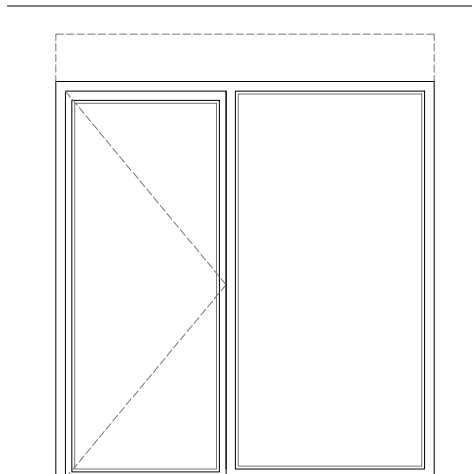
EDIFICIO ROSAE 2

E8 4º A. NIVEL SUPERIOR

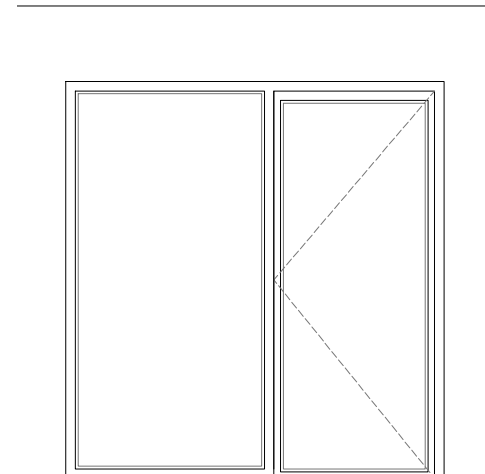




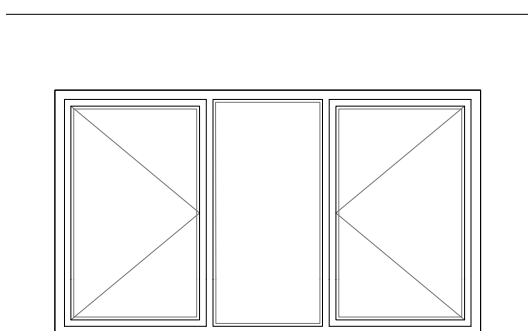
SALÓN*
FIJOS, ABATIBLE CON PERSIANA MOTORIZADA



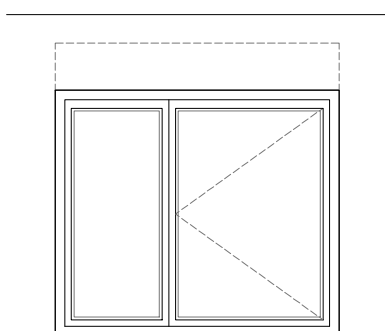
SUITE*
FIJO, ABATIBLE CON PERSIANA MOTORIZADA



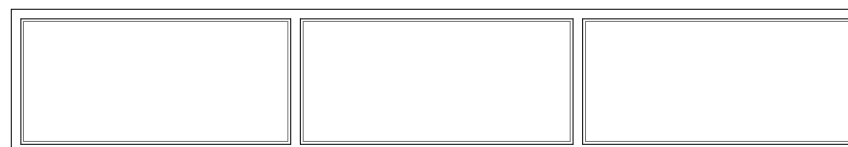
COCINA*
FIJO, ABATIBLE



COCINA*
FIJO, ABATIBLES



DORMITORIO 2-3*
FIJO, ABATIBLE CON PERSIANA MOTORIZADA



ÁTICO*
FIJOS

* ESTANCIA CON CARPINTERÍAS DE ALTAS PRESTACIONES PARA CUMPLIMIENTO ESTÁNDAR PASSIVHAUS



GESTIONA:

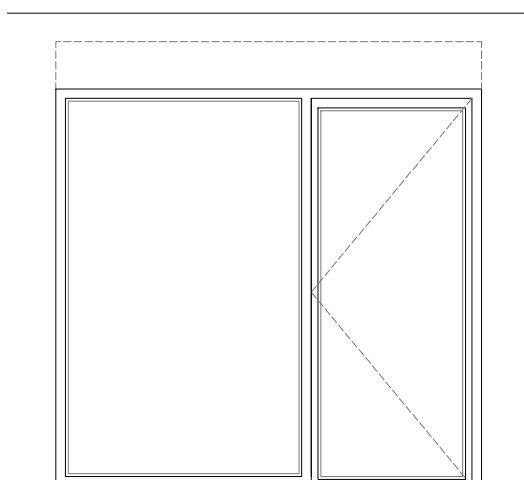


CONSTRUYE:

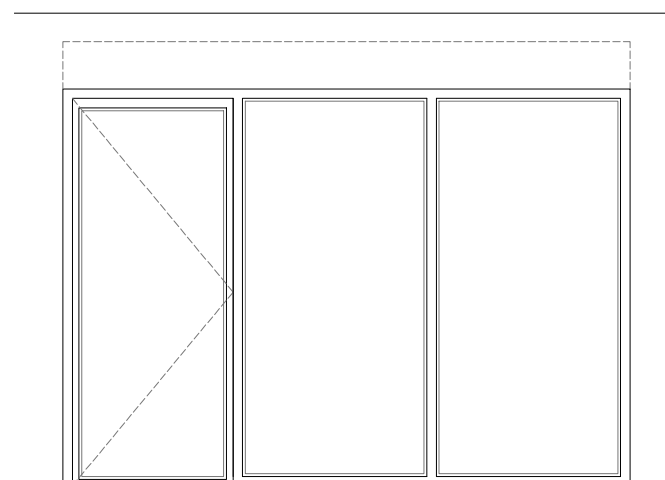


EDIFICIO ROSAE

E8 4º A CARPINTERÍAS



ÁTICO*
FIJO, ABATIBLE CON PERSIANA MOTORIZADA



ÁTICO*
FIJOS, ABATIBLE CON PERSIANA MOTORIZADA